

**TOKYO 2020  
PARALYMPIC GAMES**



**W O R L D**

**ParaVolley**

**Men's Final Qualifier**

**Duisburg, GERMANY  
1-5 JUNE 2021**

**VOLUNTEER GUIDE**



### Contents

1. Welcome.....	3
2. Organisational Chart.....	4
3. DBS – A brief introduction .....	5
4. Sitting Volleyball Introduction .....	6
4.1 Basics.....	6
4.2 The German National Team .....	6
5. Timeline (Volunteer Application) .....	7
6. Game Schedule (preliminary).....	8
7. Information About The Venue.....	9
7.1 General Information About The Venue.....	9
7.2 Journey.....	10
8. Volunteer Information.....	11
8.1 General Volunteer Information.....	11
8.2 Volunteer Job Descriptions .....	12
8.3 COVID-19 Measures .....	15
9. Q & A .....	18
10. Contact .....	20



### 1. Welcome

#### Dear Sitting Volleyball Volunteers,

Welcome to the Tokyo 2020 Sitting Volleyball Qualification Tournament in Duisburg! We deeply appreciate, that we can count on your great support, especially in turbulent times like these. Lets put up an unforgettable tournament and raise the roof because: only the winning team gets to participate in the Tokyo 2020 Paralympic Games in Japan this year!

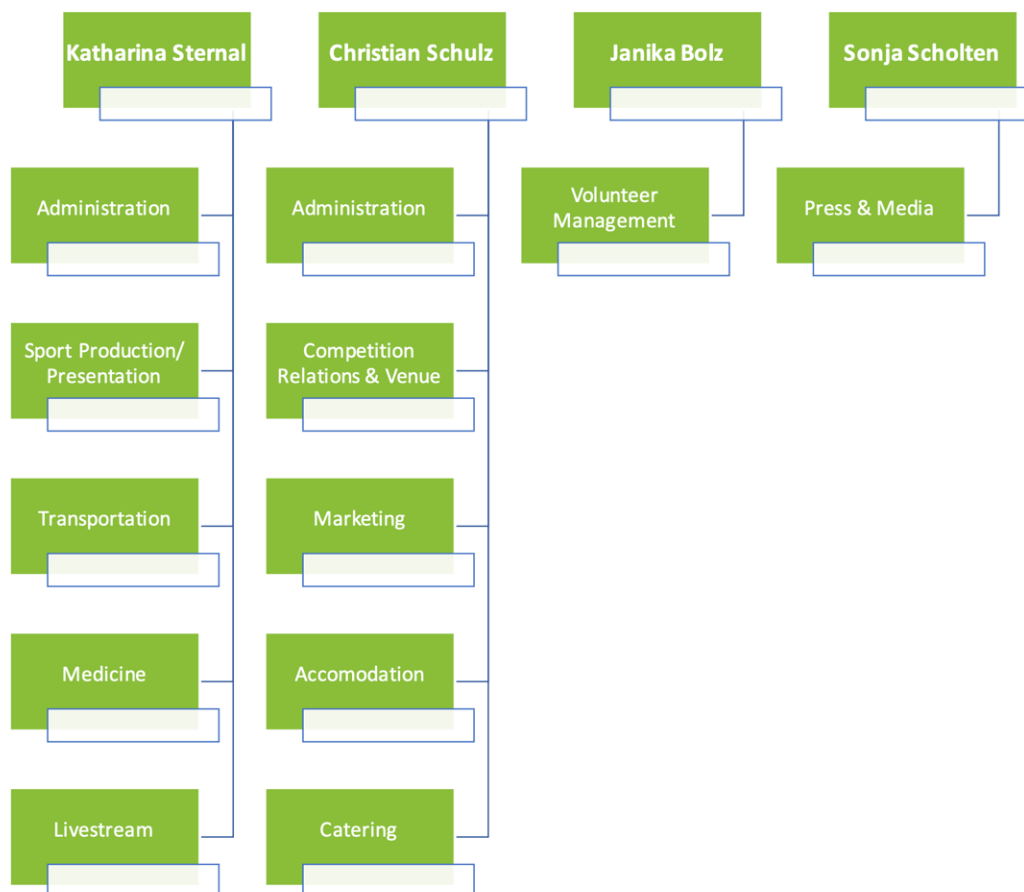
Winning the bronze medal at the European Championship in Hungary, Germany just missed the qualification for the Paralympics. Our national team won seven out of eight games and was inly beaten by the later European Champion Russia during the semi-final. This is the last chance for Germany to win the highly coveted ticket to Tokyo. However we cannot achieve this without your vigorous support – are you ready?

After the cancellation of the qualification tournament in the USA in March due to the pandemic, this is the second attempt on German soil. From 1 to 5 June 2021 there will be exciting matches between Germany, the USA, Canada, Latvia, Croatia, Kazakhstan and Ukraine. In the last couple of months our team has been practicing hard at several training camps. Now is show time!

We are very much looking forward to another exciting event and remain with a triple *Deutschland Bähm! Deutschland Bähm! Deutschland Bähm Bähm Bähm!!!*

**The Organising Committee**

## 2. Organisational Chart



### 3. DBS – A Brief Introduction



The National Paralympic Committee Germany (DBS) is the central organisation for popular, rehabilitation and professional sports for people with disabilities. Due to its 17 state and two professional affiliated associations as well as 6,200 clubs and around 643,000 members, the DBS is one of the world's largest sports associations for people with disabilities.

In the field of professional sports, the DBS usually organises at least one international event each year. From 01 to 05 June 2021, the DBS will host the 2020 Tokyo Sitting Volleyball Qualification Tournament, which are organised by World Para Volley (WPV). About 140 athletes and coaches from six different countries and about 30 national and international officials and referees will take part in this event

### 4. Sitting Volleyball Introduction

#### 4.1 Basics

Court size 10 x 6 metres

Height of Net 1.15 metres

Scoring 25 points to win a set (min. lead of 2 points)

The match is won by the team that wins 3 sets. In the case of a 2-2 tie, the deciding set (the 5th) is played to 15 points with a min. lead of 2 points.

Team Max. 12 classified players per team, incl. max. 2 players classified as of minimal impairment; 6 players on the court

Officials Michael Merten (National Coach)

Axel Rütz (Physician)

Jérôme Becher (Physical Therapist)

#### 4.2 The German National Team

The members of German Sitting Volleyball National Team have been knowing each other for several years and are very well attuned to each other. Archiving the second place at the Para Volley European Championship 2015 in Warendorf qualified the team to participate at the Paralympic Games in Rio de Janeiro. Boosted with new energy and highly ambitious they are going into another qualification round. Now it is vital to use that home advantage and secure a place on the winner's podium. Tokyo, we are coming!



#### Members

# 1 Alexander Schiffler	# 5 Stefan Hähnlein	# 6 Dominic Albrecht	# 7 Florian Singer
# 8 Martin Vogel	# 9 Lukas Schiwy	# 10 Francis Tonleu	# 11 Heiko Wiesenthal
# 13 Jürgen Schrapp	# 14 Torben Schiewe	# 16 Tom Wannemacher	# 18 Dominik Seitz

#### Previous successes:

##### Paralympics

**2016** | 6 Place

**2012** | 3 Place

##### World Championships

**2018** | 10 Place

**2014** | 6 Place

**2010** | 6 Place

##### European Championships

**2019** | 3 Place

**2017** | 5 Place

**2015** | 2 Place

**2013** | 3 Place

**2011** | 3 Place



### 5. Timeline (Volunteer Application)

<b>01 February 2021</b>	start of application phase
<b>from 01 April 2021</b>	Selection Process as soon as <b>01 April</b> you can expect a response and further information about your assigned area
<b>vsl. 29. Mai 2021</b>	joint site inspection (Sportschule Wedau)

#### Application Deadline:

Applications are continuously reviewed and evaluated. As soon as all open positions are filled, we will close the registration platform.

# VOLUNTEER GUIDE

## TOKYO 2020 QUALIFIKATIONSTURNIER SITZVOLLEYBALL DER HERREN



### 6. Game Schedule (preliminary)

Tokyo 2020 Men's Qualification Tournament Sitting Volleyball Friedrich-Alfred-Strasse 15, 47055 Duisburg 16.03.21		19:45	19:30	19:15	19:00	18:45	18:30	18:15	18:00	17:45	17:30	17:15	17:00	16:45	16:30	16:15	16:00	15:45	15:30	15:15	15:00	14:45	14:30	14:15	14:00	13:45	13:30	13:15	13:00	12:45	12:30	12:15	12:00	11:45	11:30	11:15	11:00	10:45	10:30	10:15	10:00	9:45	9:30	9:15	9:00	8:45	8:30	8:15	8:00	7:45	7:30	7:00
Time	Day	Classification	Training 1	Training 2	Warm-up	Competition	Classification	Training 1	Training 2	Warm-up	Competition	Training 1	Training 2	Warm-up	Competition	Training 1	Training 2	Warm-up	Competition	Training 1	Training 2	Warm-up	Competition	Training 1	Training 2	Warm-up	Competition	Training 1	Training 2	Warm-up	Competition	Training 1	Training 2	Warm-up	Competition	Training 1	Training 2	Warm-up	Competition	Departures												
05	20	May 20 (SUN)	Classification	Training 1	Training 2	Warm-up	Competition	Classification	Training 1	Training 2	Warm-up	Competition	Training 1	Training 2	Warm-up	Competition	Training 1	Training 2	Warm-up	Competition	Training 1	Training 2	Warm-up	Competition	Training 1	Training 2	Warm-up	Competition	Training 1	Training 2	Warm-up	Competition	Training 1	Training 2	Warm-up	Competition	Departures															
06	21	May 31 (MON)	Classification	Training 1	Training 2	Warm-up	Competition	Classification	Training 1	Training 2	Warm-up	Competition	Training 1	Training 2	Warm-up	Competition	Training 1	Training 2	Warm-up	Competition	Training 1	Training 2	Warm-up	Competition	Training 1	Training 2	Warm-up	Competition	Training 1	Training 2	Warm-up	Competition	Training 1	Training 2	Warm-up	Competition	Departures															
07	01	June 01 (TUE)	Classification	Training 1	Training 2	Warm-up	Competition	Classification	Training 1	Training 2	Warm-up	Competition	Training 1	Training 2	Warm-up	Competition	Training 1	Training 2	Warm-up	Competition	Training 1	Training 2	Warm-up	Competition	Training 1	Training 2	Warm-up	Competition	Training 1	Training 2	Warm-up	Competition	Training 1	Training 2	Warm-up	Competition	Departures															
08	02	June 02 (WED)	Classification	Training 1	Training 2	Warm-up	Competition	Classification	Training 1	Training 2	Warm-up	Competition	Training 1	Training 2	Warm-up	Competition	Training 1	Training 2	Warm-up	Competition	Training 1	Training 2	Warm-up	Competition	Training 1	Training 2	Warm-up	Competition	Training 1	Training 2	Warm-up	Competition	Training 1	Training 2	Warm-up	Competition	Departures															
09	03	June 03 (THU)	Classification	Training 1	Training 2	Warm-up	Competition	Classification	Training 1	Training 2	Warm-up	Competition	Training 1	Training 2	Warm-up	Competition	Training 1	Training 2	Warm-up	Competition	Training 1	Training 2	Warm-up	Competition	Training 1	Training 2	Warm-up	Competition	Training 1	Training 2	Warm-up	Competition	Training 1	Training 2	Warm-up	Competition	Departures															
10	04	June 04 (FRI)	Classification	Training 1	Training 2	Warm-up	Competition	Classification	Training 1	Training 2	Warm-up	Competition	Training 1	Training 2	Warm-up	Competition	Training 1	Training 2	Warm-up	Competition	Training 1	Training 2	Warm-up	Competition	Training 1	Training 2	Warm-up	Competition	Training 1	Training 2	Warm-up	Competition	Training 1	Training 2	Warm-up	Competition	Departures															
11	05	June 05 (SAT)	Classification	Training 1	Training 2	Warm-up	Competition	Classification	Training 1	Training 2	Warm-up	Competition	Training 1	Training 2	Warm-up	Competition	Training 1	Training 2	Warm-up	Competition	Training 1	Training 2	Warm-up	Competition	Training 1	Training 2	Warm-up	Competition	Training 1	Training 2	Warm-up	Competition	Training 1	Training 2	Warm-up	Competition	Departures															
12	06	June 06 (SUN)	Classification	Training 1	Training 2	Warm-up	Competition	Classification	Training 1	Training 2	Warm-up	Competition	Training 1	Training 2	Warm-up	Competition	Training 1	Training 2	Warm-up	Competition	Training 1	Training 2	Warm-up	Competition	Training 1	Training 2	Warm-up	Competition	Training 1	Training 2	Warm-up	Competition	Training 1	Training 2	Warm-up	Competition	Departures															

Participating Teams: USA, Canada, Germany, Kazakhstan, Ukraine, Croatia

## 7. Information About The Venue



### 7.1 General Information About The Venue

<b>Address</b>	Sportschule Wedau Friedrich-Alfred-Straße 15 47055 Duisburg
<b>Capacity</b>	500 Spectators
<b>Size of sports hall</b>	46 m x 22 m

Surrounded by the stunning green and wooded areas, the Sport School Wedau is considered the biggest Sport School in Germany and the biggest talent factory in football throughout the country. Eight times a year all 21 national soccer associations come together to take part in talent camps – a great chance for talents to be discovered!

With more than 20 sports offered in and around the School, it is an attractive performance center for all sport lovers.

Germany's biggest sports school is the perfect place for business meetings, trainings, courses and congresses in a pleasant setting because it is equipped with modern media. The good infrastructure and its attractive location make it easy to reach the Düsseldorf airport and the fair within a short time.

The entire area is accessible.

### Further Information

You can find further information here: <https://www.sportschule-wedau.de/> and <https://fvn.de/>

### 7.2 Journey

#### By car

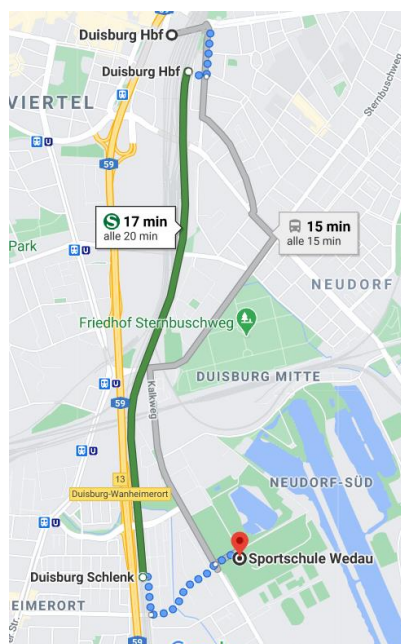
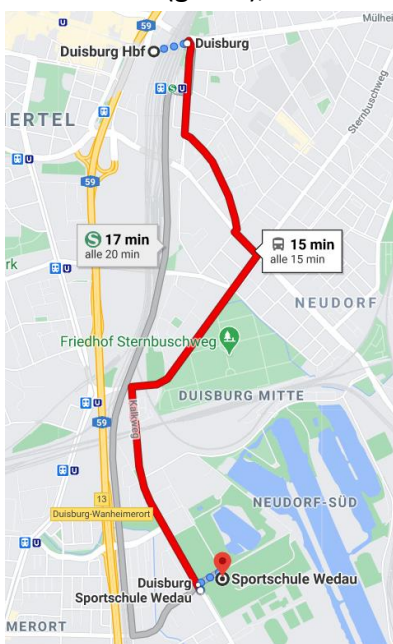
If you are coming from Cologne, exit A3 at Duisburg-Wedau, and keep left, if you are coming from Oberhausen keep right. Continue straight and turn left at the underpass. At the end of the road (Kalkweg) turn left and at the second traffic light take another left (Friedrich-Alfred-Straße)

Exit A40 at Kreuz Duisburg onto a59 towards Düsseldorf. Here, take exit Wanheimerort and follow the signs to Wedaustadion. At the traffic light turn right and at the next traffic light take a left. You arrive at Sportschule Wedauer after 150 m. The main entrance is on the righthand side.

**NOTE:** There is two „Friedrich-Alfred-Straße“ in Duisburg! Therefore please use the postal code 47055 and look for the district „Neudorf“ or set intersection Friedrich-Alfred-Str./Kalkweg as your destination.

#### By public transport from central station Duisburg

- Bus platform East (Bussteig Ost) Bus No. 934 to „Sportschule Wedau“, The sport school is a 200m walk from there (red)
- City Train (S-Bahn) S1 to „Duisburg Schlenk“, the Sport School is a 900 m walk from there (green), this station is **CURRENTLY NOT ACCESSIBLE**



## 8. Volunteer Information

### 8.1 General Volunteer Information

As a volunteer you have the chance to take a unique look behind the scenes of the Tokyo 2020 Sitting Volleyball Qualification Tournament, meet new people, gain practical experience and, as part of an enthusiastic volunteer team, experience what it means to achieve a goal together.

The fields of activity as a volunteer are versatile and exciting. As a volunteer, you can use your strengths and experience and choose a field that suits you best.

#### Your benefits

- ★ Event clothing
- ★ Catering on your working days
- ★ Ticket for VBB public transportation (tariff zone Berlin ABC)
- ★ Volunteer lounge
- ★ Accreditation
- ★ Certificate of participation
- ★ Contact to other sports and event enthusiasts
- ★ Become part of a community
- ★ Opportunity of participation in the event arrangement
- ★ A unique look behind the scenes of the event
- ★ Practical experience in the organisation of events

#### Accommodation:

Unfortunately, we **cannot** offer you free accommodation during your stay. Below you can find an overview of low-priced accommodation close to the venue.

Name	Adress	Price/ Night	Distance to Venue
DJH Jugendherberge Duisburg	Kruppstr. 9, 47055 Duisburg	from 27 €	0,8 km
Haus Scheuten Hotel	Im Königsbusch 1B, 47249 Duisburg	from 48 €	2,0 km
Hotel Akazienhof	Düsseldorf Str. 270, 47053 Duisburg	from 54 €	3,0 km
Hotel Central Duisburg	Klößnerstr. 10-12, 47057 Duisburg	from 49 €	3,5 km
Hotel Goldener Hahn	Hohe Str. 26A, 47051 Duisburg	from 36 €	3,8 km
Ibis budget Duisburg City am Innenhafen	Falkstr. 61, 47058 Duisburg	from 44 €	4,4 km
DJH Jugendherberge Duisburg Landschaftspark	Lösörter Str., 133, 47137 Duisburg	from 24 €	10,3 km
Central Pension	Moerser Str. 98, 47198 Duisburg	from 45 €	10,7 km

Another possibility for a low-priced accommodation is booking with AirBnb. Click here to find out more <https://www.airbnb.de/>

### 8.2 Volunteer Job Descriptions

Below you can find the job description of all volunteer areas. Except for the area “team host” there is no specific skill or previous experience needed.

#### Anti-Doping/Medicine

Supports the medical and anti-doping areas.

- Preparation of the medical and anti-doping rooms according to the guidelines
- Support of the medical staff
- Support of dope tests

#### Delegation: Team Host

Organisational support of a team and its staff (team manager). Team hosts is the liaison between the organising committee and any matters in their area of responsibility.

- Act as the main contact to the Team General Manager
- Accompany teams from their arrival to their departure at the airport.
- Communicate any administrative and organisational changes to the sport information desk
- Be available to team staff from arrival until departure with a colleague (2 team hosts for 1 team) at all times
- Confirm and double check various arrangements (transport, ice times, meals etc.) in advance and inform the organising committee about any requested changes on the part of the team
- Check messages at sport information desk and report them to the team management
- **Requirement:** You should have language skills in your team’s first language or excellent English language skills as well as communicational and organisational skills. You should be very reliable.

#### Transport

Mainly responsible for driving and fleet management.

- Driver of shuttle vehicles
- Coordination with team hosts, athlete service crew and sport assistants for shuttle requirements
- Coordinates vehicle shuttle operation
- Informs the Chief of Transport
- Requirement: Driving licence class B (car)

### Logistics

Support of all logistical processes at the venue.

- Assembling
- checks and monitors the storage rooms and inventory
- Disassembling

### Press & Media (Media Center)

Coordination, support und supervision of the press/media areas.

- Support of the Media & Press Manager (s. *Contact*)
- Support journalists
- Organisation and administration at the media centre
- Supervision and coordination of the Mixed Zone
- Supervision of photo and camera positions
- Support with postings and reportings on social media
- English language skills are of advantage

### Volunteer Service, Catering & VIP

Support of catering for Volunteers and Officials.

- Breakfast preparation
- If applicable support of the catering service with lunch and dinner
- Checks the dining privileges and meal schedule
- Provision of snacks and drinks for Volunteers and Officials
- support of Guests and VIPs

### Safety & Hygiene

Manages access control at the venue und monitor compliance with hygiene measures

- this task is of particular importance due to the pandemic and our dependence on the compliance to the hygiene concept
- access control/checks accreditations
- General security supervision and ability to inform the superior about any upcoming issues over the radio immediately
- Disinfection of the balls and sport equipment
- Supports the Hygiene Manager in implementing the hygiene concept (mandatory mask-wearing, ventilation of closed rooms, Health-Check, etc..)



### Allrounder

- You are interested in all areas and ready to be deployed in all departments as needed.
- You are flexibel timewise

### Competition Management / Field of Play (FOP)

assists the Competition Manager

- Assists with all administrative duties, coordinates distribution and management of all correspondence, results and bulletins (result service)
- Assists the Technical Officials
- Support during the opening and closing ceremonies (carpeting, flag presentation, medal & price presentation, instruction of athletes and moderators)
- Assists during competition matches and trainings (ball retrievers, moppers, scoring)

### 8.3 COVID-19 Measures

Due to the continual pandemic we are forced to implement strict hygiene measurements in order to minimise risk of infection. You probably are familiar with most of the rules. Nevertheless we ask you to carefully read the information below.

#### General Guidelines

- Keep distance (at least. 1.5 m) and wear a facemask covering mouth AND nose(FFP2) at all times, except during meals at your table
- Wash your hands regularly using soap for at least 20 seconds (especially after using the toilet, blowing your nose or after a meal)
- Avoid touching your face (mouth, nose, eyes)
- Disinfect your hands regularly. There will be dispensers available. However, please carry your own hand sanitizer in your bag and use it.
- Use proper etiquette for sneezing and coughing: sneeze and cough into a handkerchief. If no handkerchief is available, cough or sneeze in the crook of your arm. Keep a minimum distance of 1.5 metres from other persons and turn away.
- Please avoid any physical contact (hugging, shaking hands)
- Ventilate closed rooms for five minutes every 30 minutes. The most suitable method is ventilation with draught.
- Walking routes specified by the organisation committee must be followed
- You must stick to the time schedule including the shift plan and meal schedule. Please understand, that you can only enter the building during your working hours.

#### Signs of Disease

- fever
- (dry) coughing
- Runny nose
- Breathing difficulties/ shortage of breath
- Headache and aching limbs
- Loss of smell and/or taste
- Sore throat
- fatigue o. exhaustion
- other symptoms of a cold

#### Arrival

- You must not have symptoms of illness or contact to a positively tested person two weeks prior to the event. Otherwise you are excluded from participating. In this case, please contact us immediately.
- The SARS-CoV-2 risk assessment questionnaire must be completed before arrival and sent by e-mail to the hygiene officer of the event. If the risk assessment form is not or only partially answered, participation is excluded.
- all volunteers and external service providers who leave the event site in between



undergo a SARS-CoV-2 antigen test are tested daily upon re-entering the building. On entry to the training and competition site, all volunteers will carry out a contact risk and symptom evaluation. This includes temperature control and a questionnaire.

- The transport from the airport or train station to the accommodation is carried out separately by teams in sufficiently large transport vehicles. During the transport the wearing of a mouth and nose protector is obligatory, otherwise no transport will take place.

### **At The Venue And Accomodation**

- Compliance with hygiene measures is monitored by the LOC, WPV, volunteers and the event's hygiene officer. Violations can lead to exclusion from the event.
- all volunteers and external service providers who leave the event site in between undergo a SARS-CoV-2 antigen test are tested daily upon re-entering the building. On entry to the training and competition site, all volunteers will carry out a contact risk and symptom evaluation. This includes temperature control and a questionnaire.
- Each person entering or leaving the training and competition site is recorded with date and time. This is to ensure that the maximum number of persons admitted to the competition site is not exceeded and to trace potential chains of infection. Participation is not possible without consent to data storage.
- Admission times are determined by individual volunteer shift plan. Possible allocated admission times must be strictly adhered to.
- The walking routes specified by the organiser must be followed in order to minimise encounter traffic.
- Only your own drinking bottles or sealed water bottles provided by the organiser, your own towels and other own equipment may be used. This material may not be shared under any circumstances.
- Avoid contact during welcome, farewell and cheering rituals before, during and after the match.

### **Behaviour in Case of Suspicion of Infection**

If you show signs of illness (see p. 15) that could indicate infection with the coronavirus SARS-CoV-2, or if you answer "Yes" to one of the questions in the SARS-CoV 2 risk questionnaire or the Corona Warn-App shows a positive contact, the following measures must be taken:

1. Put on a mouth and nose protector.
2. Immediately go to your accomodation and place yourself in quarantine.
3. Possible roommates should immediately put on a mouth-and-nose protection and keep sufficient distance.
4. Avoid contact with the rest of the team. Restrict interaction to protected contact with medical



personnel with appropriate protective equipment (FFP-2 mask, protective suit, gloves).

5. Contact the event's hygiene officer by telephone. The telephone number will be added in due course and will be listed in the telephone list in the program booklet. The hygiene officer will immediately discuss the further procedure with the crisis team.
6. Keep calm, do not leave the room, drink a lot and record the symptoms.
7. All contact persons must be named.
8. A molecular biological test (PCR) for SARS-CoV-2 shall be performed.
9. Stay in quarantine until test results are back
10. In case of a positive corona test (PCR) result, remain in domestic quarantine and follow the instructions of the responsible health authority.

### Corona Warning-App

The Corona Warning App helps to determine whether contact has taken place with an infected person and whether there is a risk of infection. In this way, chains of infection can be broken more quickly.

The app runs on your smartphone while you go about your daily business. It detects other smartphones nearby on which the app is also activated. The app then stores their random Bluetooth IDs (random codes) for a limited time. These encrypted IDs (random codes) do not allow any conclusions to be drawn about you or your location.

The app is an offer from the German government. Download and use of the App is completely voluntary. It is available free of charge in the App Store and can be downloaded from Google Play.

### Corona Testung Centres

Testzentrum Duisburg  
Theater am Marientor (TaM)  
Plessingstr. 20  
47051 Duisburg

Test Center Düsseldorf Airport  
Cetogene, between Gate B and C  
Flughafenstraße  
40474 Düsseldorf

Further information <https://www.zusammengegencorona.de/>

## 9. Q & A

### **Will my travel expenses to Duisburg be covered?**

*Unfortunately, we cannot cover any travel expenses to Tokyo 2020 Sitting Volleyball Qualification Tournament.*

### **Which means of transport will be provided during the Tokyo 2020 Sitting Volleyball Qualification Tournament?**

*We will provide you with a ticket for the local transport. On your working days you can use the local public transport free of charge upon presentation of your accreditation. If you can't show your accreditation, you have to buy a ticket.*

### **Will I be accommodated?**

*Unfortunately, we cannot offer accommodation for volunteers. Accommodation costs must be paid on your own.*

### **Will there be a catering service?**

*On your working days we will organise free breakfast, lunch and dinner for you. In addition, coffee, tea and snacks are available during your work shifts.*

### **What are the general requirements for volunteer work?**

*You must be at least 16 years old on the day of your first assignment. Volunteers working in the transport sector require a class B driving licence.*

### **What does Duisburg 2021 offer me as a volunteer?**

*As a volunteer you will receive event clothing from us, catering on your working days, a ticket on your working days for the local public transportation in Duisburg and a certificate for your volunteer assignment. Above all, the Tokyo 2020 Sitting Volleyball Qualification Tournament offers all volunteers the unique opportunity and chance to take an incomparable look behind the scenes of the world's fastest sport.*

### **Am I automatically accepted as a volunteer by registering on the platform?**

*No, registration on the platform does not automatically lead to acceptance as a volunteer. We will start the selection procedure with all registered volunteers in order to fill all positions as good as possible. You can expect a response as soon as 01 April 2021.*

### **Will I be paid during my assignment?**

*As the term "volunteer" implies, this activity is unpaid. Certainly, we will provide the tickets for the local public transport in Duisburg, meals during work shifts and official clothing free of charge.*

### **Is it possible to register as a group on the platform?**

*It is not possible to register a group on the platform; registration must be made individually.*

# VOLUNTEER GUIDE

## TOKYO 2020 QUALIFIKATIONSTURNIER SITZVOLLEYBALL DER HERREN



---

*Unfortunately, we cannot guarantee that two volunteers who would like to work together in the same field will be able to do so effectively. You are still welcome to express this wish. We will do our best to consider it.*

### **Will the volunteers be trained?**

*Once you have received confirmation of participation, you will be provided with further general information about the event and specific information about your area of assignment. There will be e-learning (webinars) or area-specific info sheets. In addition, there will probably be a joint site inspection of the Venue on 29 May 2021.*

### **When will I receive information on accreditation and equipment distribution?**

*After you have received a confirmation of participation, we will inform you about the further steps regarding accreditation and equipment issue.*



## 10. Contact

### Event Management NPC Germany:

Katharina Sternal

Phone: 0049 2234 3000 208

E-Mail: [sternal@dbs-npc.de](mailto:sternal@dbs-npc.de)

Christian Schulz

Phone: 0049 2234 3000 219

E-Mail: [schulz@dbs-npc.de](mailto:schulz@dbs-npc.de)

### Press and Media

Sonja Scholten

E-Mail: [presse2021@dbs-npc.de](mailto:presse2021@dbs-npc.de)

### Vonunteer Management

Janika Bolz

Phone: 0049 162 564 5471

E-Mail: [bolz@dbs-npc.de](mailto:bolz@dbs-npc.de)

### Hygiene Officer

E-Mail: [hygiene2021@dbs-npc.de](mailto:hygiene2021@dbs-npc.de)

## Deutscher Behindertensportverband e.V. – National Paralympic Committee

### Head Office

#### Adress

Tulpenweg 2-4  
50226 Frechen

#### Phone

00492234 6000 208

#### Fax

00492234 6000 4208

#### E-Mail

[duisburg2021@dbs-npc.de](mailto:duisburg2021@dbs-npc.de)

**We are looking forward to meeting you!**